

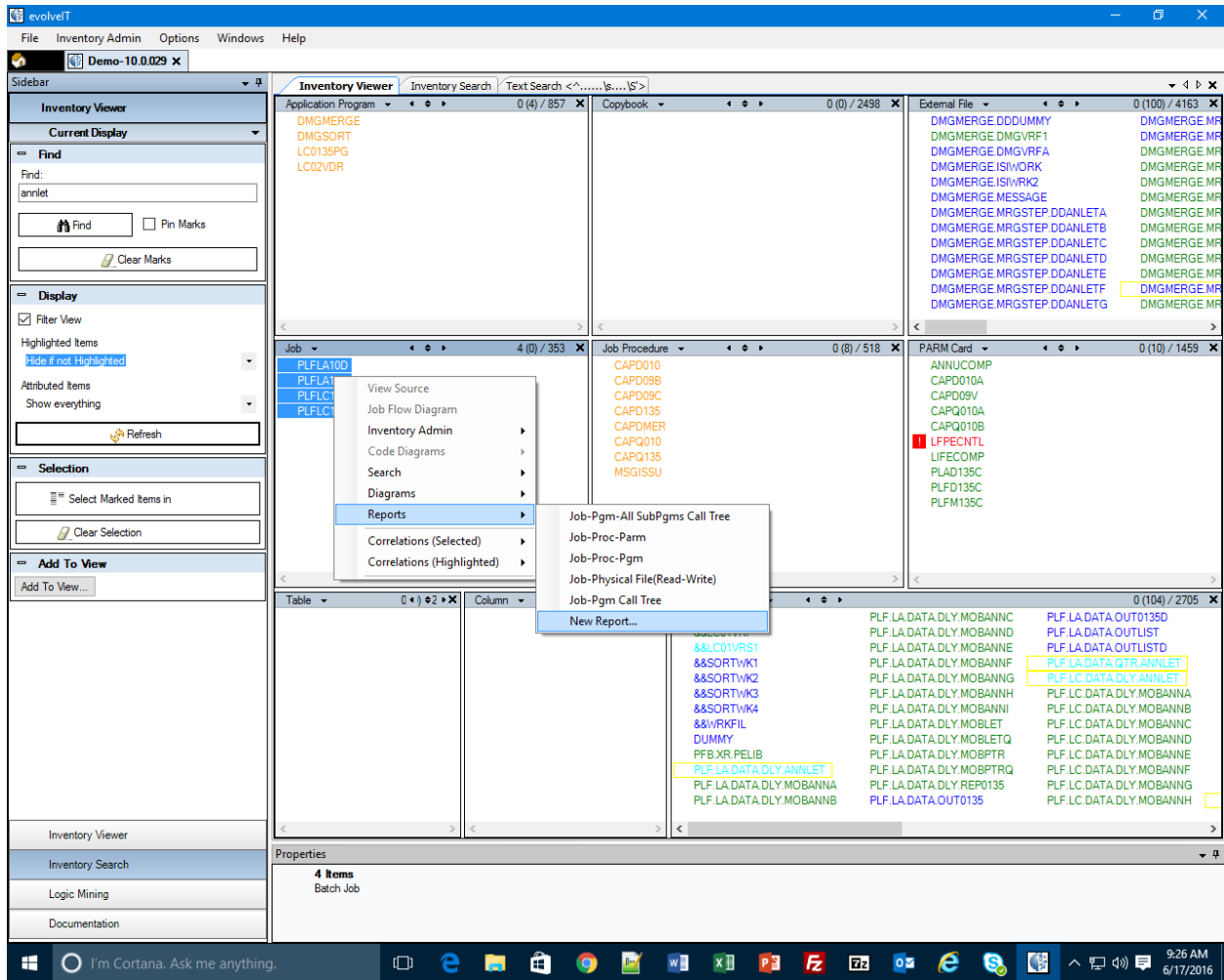
Building Custom Reports / Diagrams in CM evolveIT

To build a custom Report or Diagram, use the Inventory Viewer to select the components that you want to use as a starting point.

Step 1: Make your selection and Filter your View.

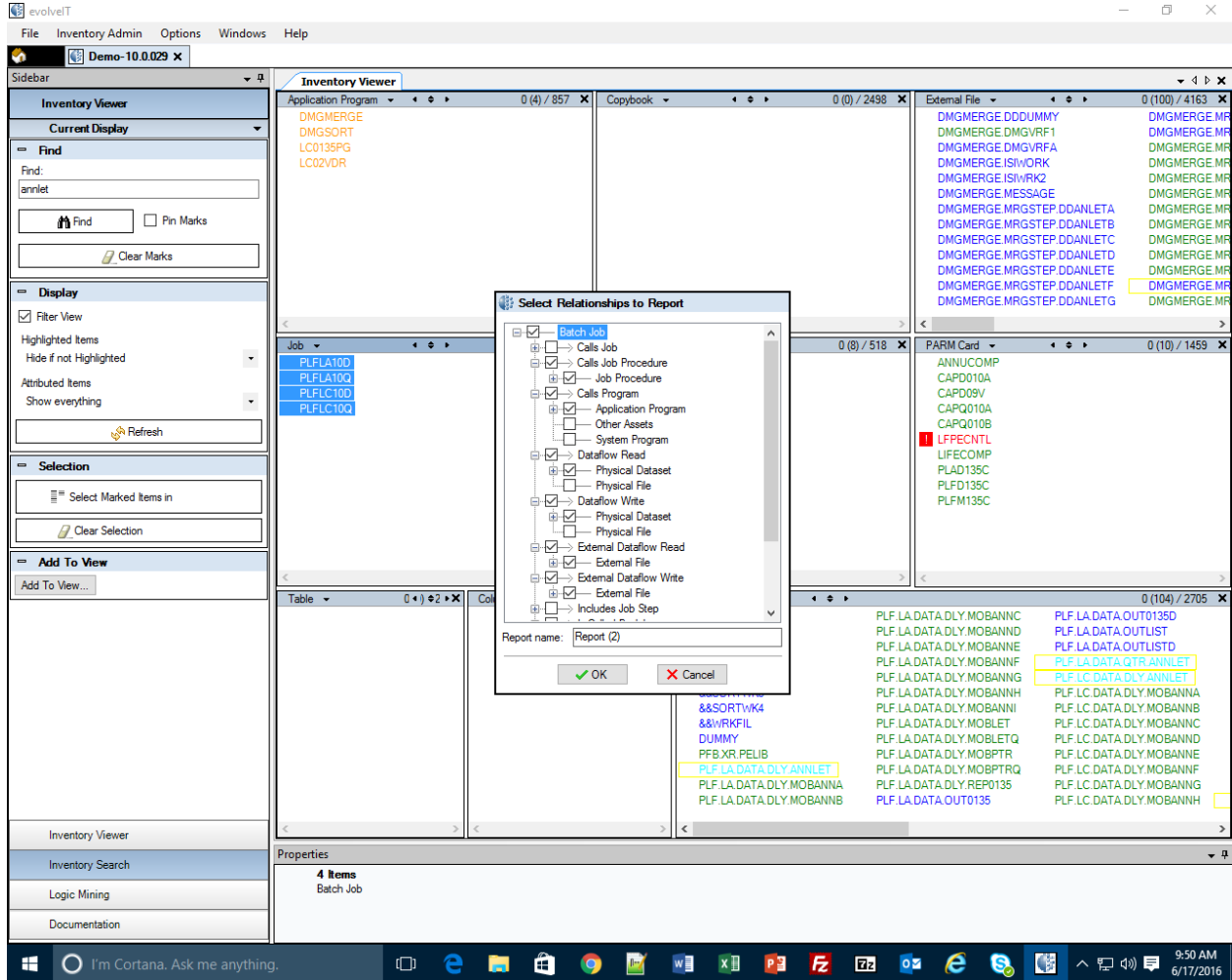
The screenshot displays the CM evolveIT Inventory Viewer interface. The main window is titled "Inventory Viewer" and shows a list of components. The "Find" field is set to "annlet". The "Display" section has "Filter View" checked, and a red box highlights the "Filter View" checkbox with a red "2". The "Highlighted Items" section shows a list of components: PLFLA10Q, PLFLA10Q, PLFLC10D, and PLFLC10Q. A red box highlights this list. The "Selection" section has "Select Marked Items in" and "Clear Selection" buttons. The "Add To View" section has an "Add To View..." button. The main window is divided into several panes: "Application Program" (0 (4) / 857), "Copybook" (0 (0) / 2498), "External File" (0 (100) / 4163), "Job" (4 (0) / 353), "Job Procedure" (0 (8) / 518), and "PARM Card" (0 (10) / 1459). The "Job" pane shows a list of components: CAPD010, CAPD09B, CAPD09C, CAPD135, CAPDMER, CAPQ010, CAPQ135, and MSGISSU. The "Job Procedure" pane shows a list of components: CAPD010, CAPD09B, CAPD09C, CAPD135, CAPDMER, CAPQ010, CAPQ135, and MSGISSU. The "External File" pane shows a list of components: DMGMERGE DDDUMMY, DMGMERGE DMGVRFA, DMGMERGE ISIWK, DMGMERGE ISIWK2, DMGMERGE MESSAGE, DMGMERGE MRGSTEP DDANLETA, DMGMERGE MRGSTEP DDANLETB, DMGMERGE MRGSTEP DDANLETC, DMGMERGE MRGSTEP DDANLETD, DMGMERGE MRGSTEP DDANLETE, DMGMERGE MRGSTEP DDANLETF, and DMGMERGE MRGSTEP DDANLETG. The "PARM Card" pane shows a list of components: ANNUCOMP, CAPD010A, CAPD09V, CAPQ010A, CAPQ010B, LFPECNTL, LIFECOMP, PLAD135C, PLFD135C, and PLFM135C. The "Physical Dataset" pane shows a list of components: PLF.LA.DATA.DLY.MOBANNC, PLF.LA.DATA.DLY.MOBANND, PLF.LA.DATA.DLY.MOBANNE, PLF.LA.DATA.DLY.MOBANNF, PLF.LA.DATA.DLY.MOBANNG, PLF.LA.DATA.DLY.MOBANNH, PLF.LA.DATA.DLY.MOBANNI, PLF.LA.DATA.DLY.MOBLET, PLF.LA.DATA.DLY.MOBLETQ, PLF.LA.DATA.DLY.MOBPTR, PLF.LA.DATA.DLY.MOBPTRQ, PLF.LA.DATA.DLY.REP0135, and PLF.LA.DATA.DLY.MOBANNB. The "Table" pane shows a list of components: &&SIWRK2, &&LC01VRF, &&LC01VRS1, &&SORTWK1, &&SORTWK2, &&SORTWK3, &&SORTWK4, &&WRKFIL, DUMMY, PFB.XR.PELIB, PLF.LA.DATA.DLY.ANNLET, PLF.LA.DATA.DLY.MOBANNA, and PLF.LA.DATA.DLY.MOBANNB. The "Column" pane shows a list of components: PLF.LA.DATA.DLY.MOBANNC, PLF.LA.DATA.DLY.MOBANND, PLF.LA.DATA.DLY.MOBANNE, PLF.LA.DATA.DLY.MOBANNF, PLF.LA.DATA.DLY.MOBANNG, PLF.LA.DATA.DLY.MOBANNH, PLF.LA.DATA.DLY.MOBANNI, PLF.LA.DATA.DLY.MOBLET, PLF.LA.DATA.DLY.MOBLETQ, PLF.LA.DATA.DLY.MOBPTR, PLF.LA.DATA.DLY.MOBPTRQ, PLF.LA.DATA.DLY.REP0135, and PLF.LA.DATA.DLY.MOBANNB. The "Properties" section at the bottom shows "4 Items" and "Batch Job". The Windows taskbar at the bottom shows the time as 9:47 AM on 6/17/2016.

Step 2: "Right-Click" on the selected assets and select "Reports – New Report".



Step 3: Make the selections of the relationships that you would like to see in the report. Click "OK" when you are ready for evolveIT to generate the Report.

Keep in mind that you are looking for other assets / components that are related to your original selection. You can also add additional levels of relationships by clicking the "+" next to the first selection you make. These 2nd and 3rd level selections will add relationships to the asset type immediately above the selection.



Step 4: Once you see your report, remember that you can request further information from the report by “Right Clicking” on any of the colored names in the report and using the pop-up menu.

